

Screening of Argentine native fungal strains for biocontrol of the grasshopper *Tropidacris collaris*: relationship between fungal pathogenicity and chitinolytic enzyme activity

S. A. Pelizza · L. A. Elíades · M. C. N. Saparrat ·
M. N. Cabello · A. C. Scorsetti · C. E. Lange

Received: 14 April 2011 / Accepted: 27 October 2011 / Published online: 8 November 2011
© Springer Science+Business Media B.V. 2011

Abstract *Tropidacris collaris* (Orthoptera: Romaleidae) is a large and voracious grasshopper, which, in recent years, has become a recurrent pest in increasingly extensive areas of Argentina's northern provinces. In the present work chitinase activity was measured in 59 entomopathogenic fungal isolates native to Argentina, and the relationship between enzymatic activity and fungal virulence was assessed. Isolate LPSC 1067 caused the highest mortality on *T. collaris* nymphs ($97.7 \pm 1.22\%$). Nine isolates caused no mortality, while the remaining 49 caused mortalities ranging from

$6.6 \pm 0.3\%$ (LPSC 770) to $91.06 \pm 1.51\%$ (LPSC 906). Several isolates revealed chitinolytic capabilities on test plates, although the activities differed with respect to the ratio of the chitin-decay-halo and fungal-colony diameters. A principal component analysis indicated that isolate LPSC 1067, obtained from a long-horned grasshopper (Orthoptera: Tettigoniidae), would be a potential candidate for *T. collaris* biocontrol because the strain exhibited the highest mortality, a shorter median lethal time, and a high enzymatic activity and growth rate.

Keywords Biocontrol · Chitinase activity · Entomopathogenic fungi · *Tropidacris collaris* · Grasshopper

S. A. Pelizza (✉) · L. A. Elíades · M. C. N. Saparrat ·
M. N. Cabello · A. C. Scorsetti
Instituto de Botánica Carlos Spegazzini (FCNyM-UNLP), 53 #
477, 1900 La Plata, Argentina
e-mail: pelizza@cepave.edu.ar

S. A. Pelizza · C. E. Lange
Centro de Estudios Parasitológicos y de Vectores (CEPAVE),
CCT-La Plata-CONICET-UNLP, Calle 2 # 584, 1900 La Plata,
Argentina

M. C. N. Saparrat
Instituto de Fisiología Vegetal (INFIVE), Universidad Nacional
de La Plata (UNLP), CCT-La Plata, Consejo Nacional de
Investigaciones Científicas y Técnicas (CONICET), Diag. 113 y
61, CC 327, 1900 La Plata, Argentina

M. C. N. Saparrat
Cátedra de Microbiología Agrícola, Facultad de Ciencias
Agrarias y Forestales, Universidad Nacional de La Plata
(UNLP), 60 y 119, 1900 La Plata, Argentina

M. N. Cabello · C. E. Lange
Comisión de Investigaciones Científicas (CIC), Buenos Aires,
Argentina

Introduction

In different regions of Argentina, as in other parts of the world, certain species of grasshoppers and locusts are major agricultural pests (Carbonell et al. 2006). The romaleid *Tropidacris collaris* (Stoll), one of the largest grasshoppers ($\text{♂} = 73\text{--}101$ mm, $\text{♀} = 92\text{--}126$ mm), is voracious and strongly gregarious during juvenile development. Although adults tend to prefer the leaves of hardwood trees and bushes, *T. collaris* is a polyphagous species. The crops known to be affected include sugar cane, cotton, olive, jojoba, corn, soybean, and wheat (Barrera and Paganini 1975; Carbonell 1986). The marching bands of nymphs consume virtually all the plant material available within their vicinity. In recent years, *T. collaris* has become an increasingly recurrent pest in progressively extensive areas of some northern provinces of Argentina (Catamarca, Córdoba, Chaco, and Santiago del Estero). There have been no reports of pathogens specific

for *T. collaris* (Lange et al. 2005). *Paranosema locustae*, a microsporidium developed in the USA as a grasshopper biocontrol agent and established in Argentina in some areas (Lange and Azzaro 2008; Lange 2010), did not produce encouraging results when tested against *T. collaris* under laboratory conditions (Lange et al. 2008). At the present time, chemical insecticides are still the only means of grasshopper control available, but their use is of significant environmental concern.

Unlike entomopathogenic bacteria, viruses, and most protists that invade insects through the alimentary canal, fungi can also actively penetrate the host exoskeleton (Charnley 1984; Hajek and St. Leger 1994). Fungal input through the cuticle is mediated by a combination of mechanical processes and enzymatic lysis (Hassan and Charnley 1989). The relative contribution of each process depends on several factors, including the chemistry of the cuticle, the intrinsic enzymatic capabilities of the entomopathogenic fungi, and the structure and composition of the exoskeleton (Charnley 1984). Among the enzyme systems involved in the fungal attack on insects, different chitinases have been shown to be better determinants of fungal virulence within the complex and multifactorial insect host-pathogen relationship (Fang et al. 2007; Yang et al. 2007; Gillespie et al. 2000).

Chitin, a structural polysaccharide that occurs in the exoskeleton and gut linings of insects, is a key target for selective pest-control agents (Binod et al. 2007). Accordingly, entomopathogenic fungi such as *Metarhizium anisopliae* (Mesch.) Sorokin, *Beauveria bassiana* (Bals.) Vuill., and *Nomurea rileyi* (Farlow) (Ascomycota: Hypocreales) can overcome those exoskeletal molecular barriers by elaborating multiple extracellular degradative enzymes, including chitinases and proteases, which enable the pathogens to penetrate the exoskeleton and expedite infection (Krieger de Moraes et al. 2003; Binod et al. 2007).

Early studies by Coudron et al. (1984) demonstrated that chitinolytic activity in several entomopathogens is necessary for growth and potentially needed for penetration. Brandt et al. (1978) proposed that chitinases cause perforations in the external membranes, thus facilitating the entry of pathogens into the tissues of susceptible insects.

Knowledge of the fungal enzymatic activities involved in insect penetration and a selection of virulent fungal strains are required for the development of an efficient fungal agent for the biological control of grasshoppers. Accordingly, in this study, we analyzed the effectiveness of 59 fungal strains, isolated both from several insects and from soil collected in Argentina, in the control of *T. collaris* under laboratory conditions and determined the relationship between the chitinase levels of these fungi and their insecticidal activities.

Materials and methods

Collection of insects

Nymphs of *T. collaris* were collected in February 2010 with sweep nets in dense woodland vegetation at a site (27°8'21.9"S; 61°34'23.8"W) near Tres Estacas, in the western Chaco Province, Argentina. The area is part of the Chaqueña Biogeographic Province (Cabrera and Willink 1973), where the annual rainfall is 600 mm and the average temperature ranges from 19 to 21°C, with summer maxima reaching 42–46°C. Samples were immediately taken to the laboratory where they were kept in groups in wire-screened cages in a rearing room under controlled conditions (30°C; 14:10, L:D photoperiod; 60% relative humidity).

Fungal isolates

The fungal strains used were anamorphic Ascomycota belonging to the culture collection of the Spegazzini Institute (LPSC), which had been isolated from a broad spectrum of insects and soil within several locations throughout Argentina (Table 1). The conidia of different isolates were obtained from cultures on potato-dextrose-agar medium after incubation for 10 days at 25°C in the dark.

Pathogenicity assays

Conidia were harvested with disposable cell scrapers (Fisherbrand®) from 10-day-old cultures and placed in test tubes containing 0.01% (v/v) Tween 80 (Merck). Suspensions were vortexed for 2 min, filtered through four layers of sterile muslin, and adjusted to 1×10^8 conidia/ml according to Prior et al. (1995) after cell enumeration in a Neubauer hemocytometer. The viability of the conidia from all isolates used in the tests was determined after 24 h, as described by Lane et al. (1988). This germination test was repeated for each stock suspension to maintain the fidelity of the viability assessments.

Three replicates (on different dates), of 15 third-instar *T. collaris* nymphs each, were sprayed, through the use of a 35-ml glass atomizer, with about 1 ml of a suspension containing 1×10^8 conidia/ml (in 0.01% [v/v] Tween 80). Three additional replicates of 15 grasshoppers each for use as controls were sprayed in the same fashion, but with 1 ml of 0.01% [v/v] Tween 80 only. The grasshoppers were kept in groups of 15 individuals in acetate tubes (50 × 9-cm; Henry 1985) and fed with “quebracho” (*Aspidosperma, Schipnosis*) leaves. Treated and control insects were maintained at 30°C, a 60% relative humidity, and a 14:10-h light:dark photoperiod. The cumulative mortality was

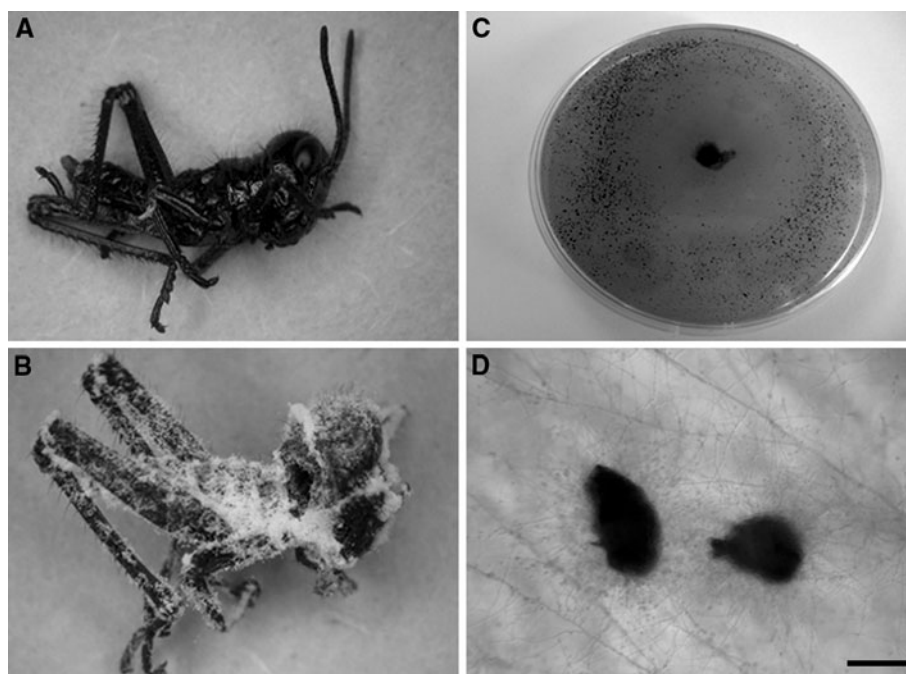
Table 1 Characteristics of the fifty-nine entomopathogenic fungi used and the results obtained for mean lethal time, percent mortality (means \pm SD), enzymatic activity, and growth on chitin-azure

Fungal isolates	Isolate number LPSC	Isolation substrate	Media lethal time	Percent mortality (means \pm SD)	Chitinase activity (means \pm SD)	Growth (cm) on chitin-azure (means \pm SD)
<i>Beauveria bassiana</i>	893	Hemiptera: Cicadellidae	–	0	1.83 \pm 0.47	6.8 \pm 0.3
<i>Beauveria bassiana</i>	883	Hemiptera: Cicadellidae	–	0	0	7.13 \pm 0.32
<i>Beauveria bassiana</i>	885	Hemiptera: Cicadellidae	–	0	0	6.76 \pm 0.3
<i>Beauveria bassiana</i>	900	Coleoptera: Lampyridae	–	0	2.53 \pm 0.5	7.63 \pm 0.37
<i>Beauveria bassiana</i>	803	Soil	–	11.1 \pm 0.46	3.53 \pm 0.47	8 \pm 0
<i>Beauveria bassiana</i>	888	Hemiptera: Pentatomidae	–	13.3 \pm 0.5	0	8 \pm 0
<i>Beauveria bassiana</i>	894	Hemiptera: Cicadellidae	–	13.3 \pm 0.4	3.13 \pm 0.32	6 \pm 0.5
<i>Beauveria bassiana</i>	169	Lepidoptera: Pyralidae	–	17.7 \pm 0.58	2.96 \pm 0.75	8 \pm 0
<i>Beauveria bassiana</i>	881	Soil	–	20 \pm 0.7	1.6 \pm 0.43	6.33 \pm 0.49
<i>Beauveria bassiana</i>	890	Hemiptera: Cicadellidae	–	26.6 \pm 0.69	0	6.4 \pm 0.4
<i>Beauveria bassiana</i>	771	Hemiptera: Reduviidae	–	26.6 \pm 0.81	1.6 \pm 0.43	5.56 \pm 0.3
<i>Beauveria bassiana</i>	884	Hemiptera: Cicadellidae	–	31.06 \pm 0.86	0	5.5 \pm 0.3
<i>Beauveria bassiana</i>	901	Coleoptera: Lampyridae	–	33.3 \pm 0.93	2.73 \pm 0.75	8 \pm 0
<i>Beauveria bassiana</i>	886	Hemiptera: Membracidae	–	37.7 \pm 1.21	0	6.46 \pm 0.41
<i>Beauveria bassiana</i>	897	Coleoptera: Chrysomelidae	–	39.96 \pm 0.93	0	8 \pm 0
<i>Beauveria bassiana</i>	782	Soil	–	42.2 \pm 0.66	2.6 \pm 0.36	6.3 \pm 0.43
<i>Beauveria bassiana</i>	889	Hemiptera: Cicadellidae	–	48.8 \pm 0.86	5.2 \pm 0.2	5.46 \pm 0.25
<i>Beauveria bassiana</i>	902	Hemiptera: Cixiidae	7.28	51.06 \pm 1.16	1.16 \pm 0.05	4.33 \pm 0.2
<i>Beauveria bassiana</i>	899	Hemiptera: Cicadellidae	6.95	53.3 \pm 1.09	6.36 \pm 0.47	7.56 \pm 0.49
<i>Beauveria bassiana</i>	896	Coleoptera: Coccinellidae	6.08	55.5 \pm 0.87	2.03 \pm 0.2	6.36 \pm 0.35
<i>Beauveria bassiana</i>	887	Hemiptera: Cicadellidae	5.68	57.7 \pm 1.1	5 \pm 0.5	3.03 \pm 0.73
<i>Beauveria bassiana</i>	183	Lepidoptera: Pyralidae	5.2	60 \pm 0.99	4.63 \pm 0.55	8 \pm 0
<i>Beauveria bassiana</i>	1063	Orthoptera: Acrididae	5.27	71.06 \pm 1.01	2.5 \pm 0.4	7.2 \pm 0.5
<i>Beauveria bassiana</i>	895	Hemiptera: Cicadellidae	6.31	75.5 \pm 1.07	4.43 \pm 0.4	6.63 \pm 0.55
<i>Beauveria bassiana</i>	892	Hemiptera: Cicadellidae	5.92	77.76 \pm 1.36	5.46 \pm 0.45	6.96 \pm 0.05
<i>Beauveria bassiana</i>	898	Dermoptera: Forficulidae	4.9	80 \pm 1.15	2.66 \pm 0.4	6.33 \pm 0.73
<i>Beauveria bassiana</i>	882	Soil	5.39	82.2 \pm 1.1	4.26 \pm 0.25	5.3 \pm 0.3
<i>Beauveria bassiana</i>	1066	Heteroptera: Cimicidae	4.29	84.4 \pm 1.31	3.03 \pm 0.25	3.13 \pm 0.2
<i>Beauveria bassiana</i>	1067	Orthoptera: Tettigoniidae	3.19	97.7 \pm 1.22	6.13 \pm 0.05	8 \pm 0
<i>Clonostachys rosea</i>	785	Hemiptera: Cicadellidae	–	0	4.6 \pm 0.26	8 \pm 0
<i>Clonostachys rosea</i>	780	Hemiptera: Cicadellidae	–	28.8 \pm 0.62	0	8
<i>Clonostachys</i> sp.	1075	Soil	–	0	0	8
<i>Fusarium verticillioides</i>	1057	Acridoidea: Romaleidae	7.02	53.3 \pm 0.8	6.6 \pm 0.45	8 \pm 0
<i>Isaria javanica</i>	1071	Hemiptera: Aleyrodidae	–	15.5 \pm 0.5	2.5 \pm 0.45	8 \pm 0
<i>Lecanicillium lecanii</i>	1070	Hemiptera: Aphididae	–	22.2 \pm 0.71	0	5.23 \pm 0.25
<i>Lecanicillium muscarium</i>	1079	Hemiptera: Aphididae	–	11.1 \pm 0.59	0.86 \pm 0.05	5.43 \pm 0.2
<i>Lecanicillium</i> sp.	1069	Hemiptera: Aphididae	–	17.7 \pm 0.58	0	5.36 \pm 0.23
<i>Metarrhizium anisopliae</i>	908	Hemiptera: Cercopidae	–	19.96 \pm 0.59	0	4.43 \pm 0.25
<i>Metarrhizium anisopliae</i>	503	Soil	–	22.2 \pm 0.71	3.76 \pm 0.68	6.4 \pm 0.52
<i>Metarrhizium anisopliae</i>	84	Soil	–	37.7 \pm 1.16	2.3 \pm 0.43	4.7 \pm 0.36
<i>Metarrhizium anisopliae</i>	904	Soil	–	40 \pm 1.09	0	5.46 \pm 0.45
<i>Metarrhizium anisopliae</i>	963	Soil	–	46.6 \pm 1.05	6.5 \pm 0.1	8 \pm 0
<i>Metarrhizium anisopliae</i>	905	Hemiptera: Cercopidae	5.72	55.5 \pm 0.87	2.76 \pm 0.25	8 \pm 0
<i>Metarrhizium anisopliae</i>	909	Hemiptera: Cercopidae	6.39	64.4 \pm 1.18	2.16 \pm 0.28	5.73 \pm 0.2
<i>Metarrhizium anisopliae</i>	907	Hemiptera: Cercopidae	5.82	73.3 \pm 1.24	4.9 \pm 0.75	7.5 \pm 0.43
<i>Metarrhizium anisopliae</i>	906	Hemiptera: Cercopidae	3.8	91.06 \pm 1.51	5.06 \pm 0.5	5.93 \pm 0.51

Table 1 continued

Fungal isolates	Isolate number LPSC	Isolation substrate	Media lethal time	Percent mortality (means \pm SD)	Chitinase activity (means \pm SD)	Growth (cm) on chitin-azure (means \pm SD)
<i>Metarrhizium</i> sp.	1077	Soil	–	0	6.16 \pm 0.28	7.1 \pm 0.1
<i>Metarrhizium</i> sp.	1073	Soil	–	13.3 \pm 0.5	1.06 \pm 0.11	4.3 \pm 0.26
<i>Metharrizium</i> sp.	1074	Soil	–	39.96 \pm 1.03	2.5 \pm 0.3	8 \pm 0
<i>Nomurea rileyi</i>	779	Lepidoptera: Noctuidae	–	0	1.53 \pm 0.35	3.5 \pm 0.2
<i>Paecilomyces farinosus</i>	910	Soil	–	8.8 \pm 0.43	0	5.9 \pm 0.36
<i>Paecilomyces fumosoroseus</i>	770	Hemiptera: Aleyrodidae	–	6.6 \pm 0.3	3.76 \pm 0.41	8 \pm 0
<i>Paecilomyces fumosoroseus</i>	769	Hemiptera: Auchenorynca	–	19.96 \pm 0.53	2.2 \pm 0.1	4.93 \pm 0.15
<i>Paecilomyces lilacinus</i>	1076	Arachnida: Araneae	–	11.06 \pm 0.46	3.16 \pm 0.15	3.46 \pm 0.32
<i>Paecilomyces lilacinus</i>	827	Hemiptera: Reduviidae	–	24.43 \pm 0.62	4.73 \pm 0.2	8 \pm 0
<i>Paecilomyces lilacinus</i>	952	Soil	–	28.8 \pm 0.62	5.06 \pm 0.49	8 \pm 0
<i>Paecilomyces marquandi</i>	1078	Soil	–	0	3.16 \pm 0.3	8 \pm 0
<i>Paecilomyces marquandi</i>	1072	Arachnida: Araneae	–	35.5 \pm 0.93	5.06 \pm 0.11	8.2 \pm 0.26
<i>Tolypocladium cylindrosporum</i>	1065	Soil	6.11	66.6 \pm 1.25%	2.3 \pm 0.45	6.46 \pm 0.41

Fig. 1 Third instar *Tropidacris collaris* dead, without external mycelia **a**, and 48 h after its death caused by *Beauveria bassiana* LPSC 1067 **b**. Zone of clearance on chitin azure by *Beauveria bassiana* LPSC 1067 **c** and chitin flake colonization **d**. Bar scale = 500 μ m



recorded daily for 10 days. Dead grasshoppers with no external mycelium (Fig. 1a) were surface-sterilized by dipping them successively in 70% ethanol (10–15 s), 0.5% sodium hypochlorite solution (1 min), and sterile distilled water (1 min, two consecutive baths) according to Lacey and Brooks (1997). Next, they were placed in a sterile culture chamber consisting of a Petri dish (60 mm diameter) with a filter-paper disk that was periodically moistened with sterile distilled water and incubated at 25°C in the dark. Mycosis was confirmed by microscopic examination

of the dead grasshoppers. When mortality was higher than 50%, the median lethal time (MLT) was calculated according to Lecuona and Diaz (2001).

Fungal chitinolytic activity (chitinase)

The levels of chitinolytic activity of the fungal strains was assayed on an agar medium containing 500 ml of mineral-containing saline—(NH₄)₂SO₄, 2 g/l; KH₂PO₄, 4 g/l; Na₂HPO₄, 6 g/l; FeSO₄ 7H₂O, 0.2 g/l; CaCl₂, 1 g/l;

H₃BO₃, 10 µg/l; MnSO₄, 10 µg/l; ZnSO₄, 70 µg/l; CuSO₄, 50 µg/l; MoO₄, 10 µg/l) in 500 ml of distilled water—supplemented with 0.02% (v/v) of yeast extract, 15 g of agar (Hankin and Anagnostakis 1975), and 0.08% (w/v) of Chitin Azure[®], according to Howard et al. (2003).

Inocula were obtained from cultures grown on 2% (v/v) malt-extract agar. A 6-mm agar plug with mycelium was inoculated onto the agar surface in each plate and incubated at 24 ± 1°C for 20 days (Saparrat et al. 2008). Three replicates were carried out for each strain, and the results represent the mean values ± the standard deviation of the mean (SD). Fungal growth was estimated by measuring the diameter of the colonies. The extracellular chitinolytic activity was assayed according to Saparrat et al. (2008) on colonies for 20 days and expressed as the ratio between the discoloration-halo and the colony diameters.

Statistical analysis

To determine whether the differences among isolates with respect to each of the variables studied (i.e. percentage of mortality, chitinase activity, and colony diameter) were significant, a Univariate Analysis of Variance was performed.

Thereafter, a principal-component analysis (Johnson and Wichern 1992), in which the original variables were mortality rate, enzyme activity, colony diameter, and the observations made on the isolated fungi, was conducted. To eliminate possible biases caused by different interpretations of measurement scales, data were standardized as

$$z_j = \frac{x_j - \bar{x}_j}{S_j}$$

where x_j is the variable j -ecime and \bar{x}_j and S_j are the mean and standard deviation of that variable in the sample respectively. We used only the measurements of the observations, and only eigenvalues of ≥ 1 were retained for the principal-component analysis. This statistical method works with the correlation matrix; therefore, to measure the association between the original variables, X_k , and the principal component, Y_j , we used the correlation coefficient between the two, given by:

$$r(Y_j, X_k) = \frac{e_{kj} \sqrt{\lambda_j}}{\sqrt{S_k}}$$

where e_{kj} is the coefficient of the eigenvector standardized, λ_j is the eigenvalue j -ecime, and S_k is the variance of the variable k -ecime. To discuss joint relations between observations and variables (i.e., fungal isolates and mortality, enzyme activity, and colony diameter) biplot graphs were constructed (Gabriel 1971) from the principal-component analysis on the correlation matrix.

The principal-component analysis was performed with the software Version InfoStat 2007 (InfoStat 2001).

Results

In assessing the pathogenicity of 59 fungal isolates on third-instar nymphs of *T. collaris*, we observed that isolate LPSC 1067 caused a higher mortality and had a lower MLT with nymphs at 97.7 ± 1.22% and 3.19 days, respectively (Fig. 1b). Nine isolates caused no grasshopper mortality, while the remaining 49 showed mortalities ranging from 6.6 ± 0.3% (LPSC 770) to 91.06 ± 1.51% (LPSC 906) (Table 1). The average viability of the conidia from the different fungal isolates was 95%.

Table 1 summarizes the results of the chitinase activity of the isolates. These strains exhibited differences with respect to the diameters of the chitin-degradation halos in culture (Fig. 1c, d). *B. bassiana* (LPSC 892), *B. bassiana* (LPSC 889), *B. bassiana* (LPSC 899), *B. bassiana* (LPSC 870), *B. bassiana* (LPSC 183), *B. bassiana* (LPSC 895), *B. bassiana* (LPSC 882), *B. bassiana* (LPSC 1067), *Clonostachys rosea* (LPSC 785), *Fusarium verticillioides* (LPSC 1057), *Metarrhizium* sp. (LPSC 1077), *M. anisopliae* (LPSC 963), *M. anisopliae* (LPSC 907), *M. anisopliae* (LPSC 906), *Paecilomyces lilacinus* (LPSC 827), *P. lilacinus* (LPSC 952), and *P. marquandi* (LPSC 1072) had the highest activities (>4.2). By contrast, *Clonostachys* sp. (LPSC 1075), *B. bassiana* (LPSC 883), *B. bassiana* (LPSC 885), *B. bassiana* (LPSC 888), *Lecanicillium* sp. (LPSC 1069), *M. anisopliae* (LPSC 908), *Lecanicillium lecanii* (LPSC 1070), *B. bassiana* (LPSC 890), *Clonostachys rosea* (LPSC 780), *B. bassiana* (LPSC 884), *B. bassiana* (LPSC 886), *B. bassiana* (LPSC 897), and *M. anisopliae* (LPSC 904) exhibited no extracellular chitinase activity under the culture conditions tested.

All the strains grown on agar medium revealed different levels of development on the plates. About 65% produced colonies with diameters greater than 6 cm after 20 days of growth on a medium supplemented with chitin.

Although the fungi with chitinolytic activity evidenced this capacity on the plates at an early time after inoculation and subsequent growth (data not shown), the largest halos were reached only after 20 days of culture.

The analysis of variance indicated highly significant differences between the mortality rates, the enzyme activities, and the colony diameters of all the fungal isolates analyzed in this bioassay (Table 2).

The first component in the principal-component analysis explained 50% of the total variability in the model, the second 32%, and the third 18% (Table 3). Variables with a high degree of correlation with the first principal component (CP1) were the mortality rate and the enzyme activity. The CP1 separated the fungal isolates with a high percentage of mortality and a high enzymatic activity from those that had a low percentage of mortality and little enzymatic activity.

Table 2 Results of analysis of variance (ANOVA) for the variables mortality rate, enzymatic activity, and colony diameter

Variables studied	df	F Value	P
Mortality	58,118	29.61	<0.0001
Enzymatic activity	58,118	100.04	<0.0001
Diameter of colony	58,118	65.38	<0.0001

Table 3 Eigenvalues in the principal-components analysis and their contribution to overall variation of the model

Eigenvalue	Value	Proportion of total variation	Cumulative proportion
1	1.50	0.50	0.50
2	0.95	0.32	0.82
3	0.55	0.18	1.00

Table 4 Correlation coefficients among the variables for colony diameter, enzymatic activity, and percent mortality, and principal components (CP1 and CP2)

Variables	CP1	CP2
Diameter of colony	-0.39	0.92
Enzymatic activity	0.84	0.12
Percent mortality	0.80	0.31

The diameter of the colonies indicated a high correlation with the second principal component (CP2), segregating the fungal isolates with larger colony diameters from those of smaller diameters. Therefore, isolates with high mortality, high enzyme activity, and a larger colony diameter

were in the first quadrant of the biplot, with isolate LPSC 1067 being the most representative of this group (Table 4, Fig. 2).

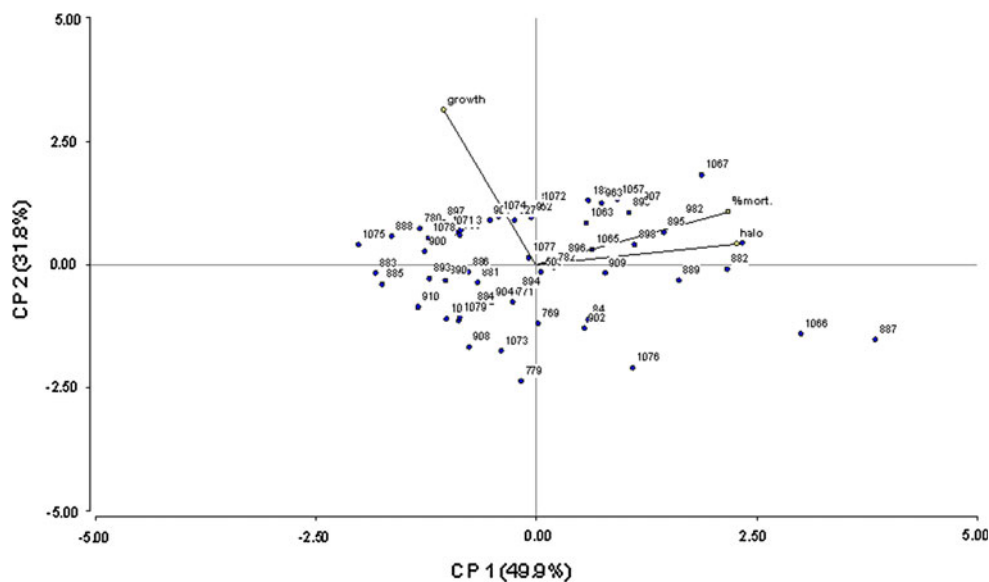
In summary, cluster 1 contained the isolates with the lowest values among the variables studied, cluster 2 the strains with higher values of the three variables, and clusters 3 and 4 the isolates with intermediate values.

Discussion

Entomopathogenic fungi are an important group of pathogens of insect pests. Some of the advantages offered for use in microbial control programs of insects are: their high specificity, contact transmission, natural dispersion, safety for non-target organisms and the ability to maintain lasting control once established in the environment (Van Driesche et al. 2007).

The pathogenesis of insects by fungi is governed by many different conditions related to the host involved, the pathogen itself, and the environment. Several mechanisms, such as the mechanical action of the fungal hyphae and the activity of enzymes, promote the fungal invasion into the body of the host (St. Leger et al. 1986a, b). Through their chitinases, entomopathogenic fungi break the structural barrier of the exoskeleton in insects. Such activities are thus effective screening criteria for selecting entomopathogenic fungi for pest biocontrol (Binod et al. 2007). The catalytic and regulatory properties of these enzymes, as well as their potential for development as biopesticide and microbial biological control agents have been investigated for several pest insects (Kramer et al. 1997). Chitinolytic enzymes play a role in depolymerizing the insect exoskeleton during the attack by entomopathogenic fungi

Fig. 2 Graphic biplot showing correlations between different fungal isolates and the observed variables percent mortality, enzyme activity (halo), and colony diameter (growth)



(Sahai and Manocha 1993). Brandt et al. (1978) proposed that chitinases cause perforations in the membranes, thus facilitating the entry of the pathogens into the tissues of the susceptible insects. Microbial chitinases have been used in mixing experiments to increase the potency of entomopathogenic microorganisms. Synergistic effects between chitinolytic enzymes and microbial insecticides have been known since the early 1970s (Binod et al. 2007).

Under the experimental conditions of this study, the results suggest a direct relationship between a high chitinolytic activity and an efficient virulence of the fungal strain. The isolate *B. bassiana* LPSC 1067 was not only the most virulent ($97 \pm 1.22\%$ mortality) but also exhibited the lowest MLT (3.19 days) against nymphs of *T. collaris*. Prior et al. (1995) reported a similar percentage of mortality with an MLT of 4 days after applying the same fungal dose to *Schistocerca gregaria* (Forsk.)

Beauveria bassiana LPSC 1067 was isolated from a katydid (Orthoptera: Tettigoniidae), a close relative of the long-horned grasshopper, collected at Salinas de Bustos ($30^{\circ}18'9.4''\text{S}$, $67^{\circ}34'40.6''\text{W}$), La Rioja province, Argentina, where the high temperatures and low humidity are thought to be unfavorable for fungal development (Roberts and Hajek 1992; Sivasankaran et al. 1998). Thus, this fungal isolate appears to be well adapted to live under the type of stressful conditions that would normally constitute one of the main limitations for using fungi in the biological control of grasshoppers.

This is the first time that a wide intraspecific variability in chitinase activity as well as in grasshopper virulence has been reported in a representative sample of different entomopathogenic fungal strains from Argentina. These results suggest that chitinase activities in particular could be used as a diagnostic criterion for the selection of candidates for the biological control of pests such as grasshoppers and locusts.

Acknowledgments This study was partially supported by Agencia Nacional de Promoción Científica y Técnica (PICT N° 914), CONICET, CICPBA, and Universidad Nacional de La Plata (11/N 651). We thank statistician Vilma Bisaro for performing the statistical tests of this investigation and are grateful to Dr. Donald F. Haggerty, a retired career investigator and native English speaker, for editing the final version of the manuscript. M. Cabello and C. Lange are members of Carrera del Investigador CICPBA.

References

- Barrera M, Paganini HI (1975) Acridios de Tucumán: notas bioecológicas. Acta Zool Lill 31:107–123
- Binod P, Sukumaran RK, Shirke SV, Rajput JC, Pandey A (2007) Evaluation of fungal culture filtrate containing chitinase as a biocontrol agent against *Helicoverpa armigera*. J Appl Microbiol 103:1845–1852
- Brandt CR, Adang MJ, Spence KD (1978) The peritrophic membrane: ultrastructural analysis and function as a mechanical barrier to microbial infection in *Orgyia pseudotsugata*. J Invertebr Pathol 32:12–24
- Cabrera AL, Willink A (1973) Biogeografía de America Latina. Monogr. 13, Ser. Biol. OEA, Washington
- Carbonell CS (1986) Revision of the neotropical genus *Tropidacris* (Orthoptera, Acridoidea, Romaleidae, Romaleinae). Proc Acad Nat Sci Philadelphia 138:366–402
- Carbonell C, Cigliano MM, Lange CE (2006) Acridomorph (Orthoptera) species of Argentina and Uruguay. CD-ROM. Publications on Orthopteran Diversity, The Orthopterists Society at the “Museo de La Plata”, Argentina
- Charnley AK (1984) Physiological aspects of destructive pathogenesis in insects by fungi: a speculative review. In: Anderson JM, Raymor ADM, Walton DWH (eds) Invertebrate microbial interactions. Cambridge University Press, Cambridge, pp 229–270
- Coudron TA, Kroha MJ, Ignoffo CM (1984) Levels of chitinolytic activity during development of three entomopathogenic fungi. Comp Biochem Physiol 79B:339–348
- Fang WG, Gou SJ, Pei XQ, Zhang YJ, Xiao YH, Li DM, Jin K, Bidochka MJ, Pei Y (2007) Increased insect virulence in *Beauveria bassiana* strains overexpressing and engineered chitinase. Appl Environ Microbiol 73:295–302
- Gabriel KR (1971) The biplot graphic display of matrices with application to principal component analysis. Biometrika 58:453–467
- Gillespie J, Burnett PC, Charnley AK (2000) The immune response of the desert locust *Schistocerca gregaria* during mycosis of the entomopathogenic fungus *Metarhizium anisopliae* during penetration of host (*Manduca sexta*) cuticle. J Gen Microbiol 135:2233–2239
- Hajek AE, St. Leger RJ (1994) Interactions between fungal pathogens and insect host. Annu Rev Entomol 39:293–322
- Hankin L, Anagnostakis SL (1975) The use of solid media for detection of enzyme production by fungi. Mycologia 67:597–607
- Hassan AEM, Charnley AK (1989) Ultrastructural study of the penetration by *Metarhizium anisopliae* through Dimilin affected cuticle of *Manduca sexta*. J Invertebr Pathol 54:117–124
- Henry JE (1985) *Melanoplus* spp. In: Singh P, Moore RF (eds) Handbook of insect rearing, vol 1, Elsevier: Amsterdam, pp 451–464
- Howard MB, Ekborg NA, Weiner RM, Hutchenson SW (2003) Detection and characterization of chitinases and other chitin-modifying enzymes. Ind Microbiol Biotechnol 30:627–635
- InfoStat (2001) Manual del usuario, versión 1. Universidad Nacional de Córdoba, Córdoba
- Johnson RA, Wichern DW (1992) Applied multivariate statistical analysis. 3rd. ed. Prentice-Hall, Englewood Cliffs
- Kramer KJ, Muthukrishnan S, Johnson L, White F (1997) Chitinases for insect control. In: Carozzi N, Koziel M (eds) Advances in insect control. The role of transgenic plants. Taylor and Francis Publishers, Washington DC, pp 185–193
- Krieger de Moraes C, Scrank A, Vainstein MH (2003) Regulation of extracellular chitinase and proteases in the entomopathogen and acaricide *Metarhizium anisopliae*. Curr Microbiol 46:205–210
- Lacey L, Brooks WM (1997) Initial handling and diagnosis of diseased insects. In: Lacey LA (ed) Manual of techniques in insect pathology. Academic Press, San Diego, pp 1–12
- Lane BS, Humphreys BSAM, Thompson K, Trinci APJ (1988) ATP content of stored spores of *Paecilomyces farinosus* and the use of ATP as criterion of spore viability. Trans Br Mycol Soc 90:109–111

- Lange CE (2010) *Paranosema locustae* (Microsporidia) in grasshoppers (Orthoptera : Acridoidea) of Argentina: field host range expanded. *Biocontrol Sci Technol* 20:1047–1054
- Lange CE, Azzaro FG (2008) New case of long-term persistence of *Paranosema locustae* (Microsporidia) in melanopline grasshoppers (Orthoptera: Acrididae) of Argentina. *J Invertebr Pathol* 99:357–359
- Lange CE, Cigliano MM, De Wysiecki ML (2005) Los acridoideos (Orthoptera: Acridoidea) de importancia económica en la Argentina. En: Barrientos-Lozano L, Almaguer Sierra P (eds) Manejo integrado de la langosta centroamericana (*Schistocerca piceifrons piceifrons*, Walker) y acridoideos plaga en América Latina. Instituto Tecnológico de Ciudad Victoria, Tamaulipas, México, pp 93–135
- Lange CE, Bardi C, Plischuk S (2008) Infectividad del agente de biocontrol *Paranosema locustae* (Microsporidia) para la “tucura quebrachera”, *Tropidacris collaris* (Orthoptera: Romaleidae), en condiciones de laboratorio. *Rev Soc Entomol Argent* 67:151–155
- Lecuona R, Diaz B (2001) Susceptibilidad de *Spodoptera frugiperda* (J. E. Smith) a los hongos entomopatógenos *Nomuraea rileyi*, *Metarhizium anisopliae* y *Beauveria bassiana*. *R I A INTA* 30:25–42
- Prior C, Carey M, Abraham YJ, Moore D, Bateman RP (1995) Development of a bioassay method for the selection of entomopathogenic fungi virulent to the desert locust, *Schistocerca gregaria* (Forsk.). *J Appl Entomol* 119:567–573
- Roberts DW, Hajek AE (1992) Entomopathogenic fungi as bioinsecticides. In: Leatham GF (ed) *Frontiers in industrial mycology*. Chapman and Hall, New York, pp 144–159
- Sahai AS, Manocha MS (1993) Chitinases of fungi and plants: their involvement in morphogenesis and host-parasite interaction. *FEMS Microbiol Rev* 11:317–338
- Saparrat MCN, Rocca M, Aulicino MB, Arambarri A, Balatti P (2008) *Celtis tala* and *Scutia buxifolia* leaf litter decomposition by selected fungi in relation to their physical and chemical properties and the lignocellulolytic enzyme activity. *Eur J Soil Biol* 44:400–407
- Sivasankaran P, Eswaramoorthy S, David H (1998) Influence of temperature and relative humidity on the growth, sporulation and pathogenicity of *Beauveria bassiana*. *J Biol Control* 12:71–75
- St. Leger RJ, Cooper RM, Charnley AK (1986a) Cuticle degrading enzymes of entomopathogenic fungi: cuticle degrading in vitro by enzymes from entomopathogens. *J Invertebr Pathol* 47:167–177
- St. Leger RJ, Charnley AK, Cooper M (1986b) Cuticle degrading enzymes of entomopathogenic fungi: mechanisms of interaction between pathogen enzymes and insect cuticle. *J Invertebr Pathol* 47:295–302
- Van Driesche RG, Hoddle MS, Center TD (2007) Use of insect pathogens as pesticides. In: Van Driesche RG, Hoddle MS, Center TD (eds) *Control of pests and weeds by natural enemies*. Forest Health Technology Enterprise Team, New York, pp 443–462
- Yang JK, Tao N, Liang LM, Mi QL, Li J, Zhang KQ (2007) Cloning of the gene *Lecanicillium psalliotae* chitinase Lpchil and identification of its potential role in the biocontrol of root-knot nematode *Meloidogyne incognita*. *Appl Microbiol Biotechnol* 76:1309–1317