

***Paisana*: A new genus of Neotropical Rhyparochromidae (Hemiptera: Heteroptera: Lygaeoidea) to accommodate *Neopamera brachialis* (Stål) and four new species**

PABLO MATÍAS DELLAPÉ

División Entomología, Museo de Ciencias Naturales de La Plata, UNLP, Paseo del Bosque s/n°, 1900 La Plata, Buenos Aires, Argentina. E-mail: pdellape@fcnym.unlp.edu.ar

Abstract

A new genus *Paisana* is erected to accommodate *Neopamera brachialis* (Stål), and four new Neotropical species: *Paisana pampeana* from Argentina, *Paisana lydiae* from Brazil, *Paisana maculata* from Argentina and Brazil, and *Paisana saopaulensis* from Brazil. *P. brachialis* (n. comb.) known only from Brazil is redescribed and recorded for the first time from Argentina. Phylogenetic affinities of this new genus are discussed. Dorsal photographs of the species, illustrations of male genitalia, and a key to the species are provided.

Key words: Rhyparochromidae, Myodochini, new genus, *Paisana*, new species, Neotropical

Introduction

Although the family Rhyparochromidae is one of the most diverse within the infraorder Pentatomomorpha, this South American family is very poorly known. The Neotropical fauna is the most discordant among the major faunal assemblages, consisting almost entirely of the subfamily Rhyparochrominae, of the tribes Myodochini, Ozophorini, Lethaeini, and Antillocorini, and a few udeocorines, as well as the subfamily Plinthisinae (Slater 1986; see the classification of Henry 1997). Among these, the Myodochini is so far the most diverse Neotropical tribe, with numerous undescribed taxa still in entomological collections.

Harrington (1980) erected the genus *Neopamera* to contain all the species included in the polyphyletic genus *Pachybrachius* Hahn from the New World, most of them Neotropical, and pointed out that she did not find any satisfactory synapomorphies for the genus. In order to clarify the phylogenetic affinities of *Neopamera* species, the author performed a revision and a phylogenetic analysis of this genus (Dellapé 2005a), and the results showed the highly polyphyletic nature of this group. These results have been published partially in a first contribution (Dellapé 2005b) in which *N. procerula* Berg was synonymized with *N. sororcula* Berg and both were transferred to the genus *Paromius* Fieber. Continuing the pursuance of this goal, the author proposes to erect a new genus to contain *Neopamera brachialis* (Stål) and four new Neotropical species.

Material and methods

Abbreviations of repositories are as follows: Museo de La Plata, La Plata, Argentina (MLP); Museo Argentino de Ciencias Naturales, Buenos Aires, Argentina (MACN); Museu de Zoologia da Universidade de São Paulo, São Paulo, Brazil (MZUSP); California Academy of Sciences, California, USA (CAC); Swedish

Museum, Stockholm, Sweden (SMNH); and Carpintero collection, Buenos Aires, Argentina (CC).

Illustrations were made using a Wild M-5 stereomicroscope with camera lucida. Photographs were taken with an Olympus C4000 digital camera attached to a Leica Wild M3Z binocular stereomicroscope. Measurements are given in millimeters.

Results

Paisana n. gen.

Type species. *Rhyparochromus (Plociomerus) brachialis* Stål 1858

Included species.

Paisana brachialis (Stål 1858) (**n. comb.**)

Paisana pampeana, **new species**

Paisana lydiae, **new species**

Paisana maculata, **new species**

Paisana saopaulensis, **new species**

Diagnosis. Head elongate, eyes distant from anterior margin of pronotum. Postocular region longer than interocellar space (except *P. Pampeana* where the postocular region is slightly shorter than the interocellar space). Procoxae with one spine in both sexes. Aedeagus unspined, vesica with two large lobes sclerotized basally.

Description. Body elongate, pruinose. *Head* constricted behind eyes forming a short neck (Figs. 1–5). Jugs rounded. Buccular juncture V-shaped, near the labial insertion. Eyes rounded. Distiflagellomere fusiform. *Pronotum*: collar demarcated by a furrow; anterior pronotal lobe slightly punctate; lateral margins of both lobes rounded. Clavus with more than three rows of punctures. External corial margin smooth or serrated. Corium with large punctures. Mesepimeron emergent, evaporative area extensive. Procoxae with a spine in both sexes; protrochanters unarmed; profemora incrassate with two rows of spines internally; male foretibiae with or without spines. Mesofemora unarmed. Meso- and metatibiae with spiniform setae.

Male Genitalia: Vesica unspined, with two large lobes sclerotized at base; ejaculatory reservoir somewhat reduced; conjunctiva without spines.

Discussion. Harrington (1980) studied the type material of Stål species and placed it in *Neopamera*. The type specimen is very poorly preserved, with head, thorax, and legs embedded in glue that makes it difficult to study. The access to abundant additional material of this species and other species closely related allowed me to establish the species' affinities with more certainty. The postocular region length and characters from the male genitalia separate this species from *Neopamera* and the other known genera.

The species of *Paisana* run to the couplet 33 in Harrington's Key to the Myodochini of the world (Harrington 1980), where the genera *Catenes* Distant and *Heraeus* Stål are identified. The genus *Catenes* shows a distinctive flattened head and an aedeagus with large spines on conjunctiva (Dellapé & Melo, 2008). *Heraeus* species show an elongated head, similar to that of *Paisana* species; however, the diagnostic character of *Heraeus* is a peculiar pronotal collar, narrow dorsally and broadening ventrally, extending forward beneath the head, which is absent in *Paisana* species. The aedeagus of *Paisana* species lacks spines, and the vesica presents two large lobes sclerotized basally (Figs. 10, 15, 20, 25, 30). *Heraeus* species show two lateral lobes, often with extensive basal sclerotization and different degrees of sclerotization on the lobes; in many species small spines are also present on the lobes and conjunctiva, and the ejaculatory reservoir is comparatively larger.

Traditionally, and as reaffirmed by Harrington (1980), the presence or absence of spines on the foretibiae of males was considered a distinctive character at the generic level. In a previous contribution (Dellapé,

2003), the author noted the existence of intrageneric variation in the genus *Ashlockobius*. The same seems to be the case in *Paisana*: the males of both *Paisana brachialis* and *Paisana pampeana* have four aligned spines on the foretibiae; in contrast, these spines are absent in *P. lydiae*, *P. maculata*, and *P. saopaulensis*.

The presence of a serrated corial margin in *Paisana lydiae* suggests existence of a stridulitrum, but the author did not find a plectrum; this is significant because the presence of a stridulatory apparatus is a diagnostic character for some Myodochini genera. It is clear that a more thorough review of the characters in the Myodochini genera is needed to clarify the homologies and phylogenetic relationships among them.

Etymology. The term *Paisana* is used by the “gauchos” from Argentina and refers to somebody that lives in the field. The gender is feminine.



FIGURES 1–5. 1—*Paisana brachialis* (Stål) comb. n. 2—*Paisana pampeana* sp. n. 3—*Paisana lydiae* sp. n. 4—*Paisana maculata* sp. n. 5—*Paisana saopaulensis* sp. n.

Key to the species of *Paisana*

- 1 Male foretibiae with a row of spines, proximal spine larger. Wings of ejaculatory reservoir reduced (Figs. 10, 15) 2
- 1' Male foretibiae unarmed. Wings of ejaculatory reservoir never extremely reduced (Figs. 20, 25, 30) 3
- 2 Distiflagellomere with a yellowish band; meso- and metafemora with a dark brown subapical band (Fig. 1) *Paisana brachialis* Stål
- 2' Distiflagellomere uniformly brown or with a diffuse yellowish band; distal quarter of meso- and metafemora darker, but without a subapical band (Fig. 2) *Paisana pampeana* n. sp.
- 3' External corial margin serrated along anterior half. Pygophore: anterior margin of dorsal aperture slightly concave; inner projections without an anterior spine (Fig. 16) *Paisana lydiae* n. sp.
- 3 External corial margin smooth. Pygophore: anterior margin of dorsal aperture slightly concave or rounded; inner projections with an anterior spine (Figs. 21, 26) 4
- 4 Femora mottled (Fig. 4). Pygophore: anterior margin of dorsal aperture rounded (Fig. 21) *Paisana maculata* n. sp.
- 4' Femora uniformly colored (Fig. 5). Pygophore: anterior margin of dorsal aperture slightly concave (Fig. 26) *Paisana saopaulensis* n. sp.

Paisana brachialis (Stål 1858) n. comb.

(Figs. 1, 6–10)

Rhyparochromus (*Plociomerus*) *brachialis* Stål 1858: 39–40

Plociomerus brachialis: Walker 1872: 119

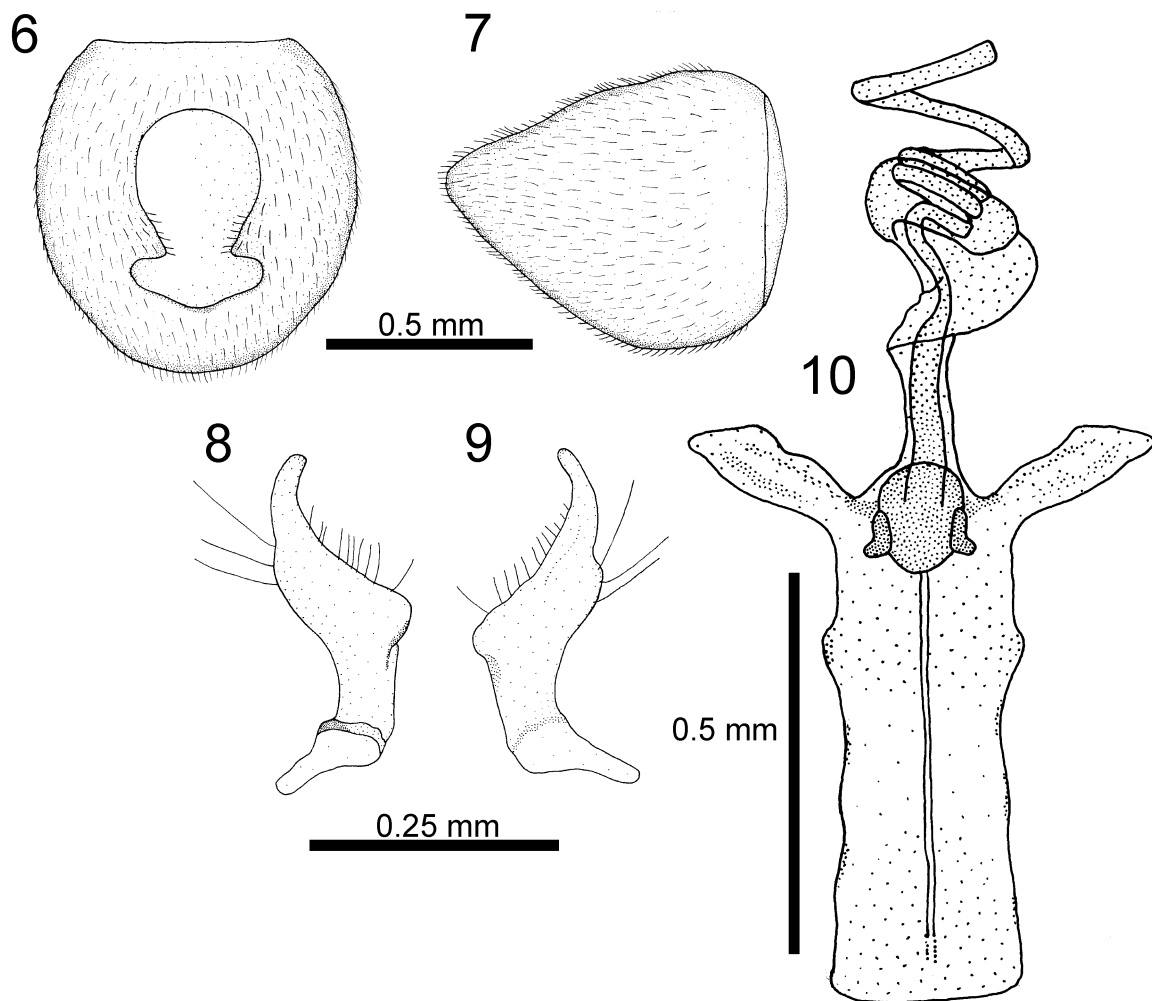
Pamera brachialis: Stål 1874: 150; Lethierry & Severin 1894: 192

Pachybrachius brachialis: Slater 1964: 1117

Neopamera brachialis: Harrington 1980: 107; Slater & O'Donnell, 1995: 151

Redescription. (Fig. 1) Head dark to dark brown with reddish hue, clypeus brown; with abundant, anteriorly decumbent, short silver setae, and longer, semierect, scattered setae dorsally. Antenniferous tubercles slightly divergent. Eyes slightly oval, with some setae between ommatidia. Ocelli located behind a line passing through posterior border of the eyes, closer to eyes than to collar. Rostrum brown, unevenly colored; apex of article IV dark brown; with scattered erect setae. With rostrum at resting position, article IV is situated on mesosternum, reaching mesocoxae in some specimens.

Scapus and pedicellus, and basal 2/3 of basiflagellomere light brown, rest of basiflagellomere and distiflagellomere darker, latter with a yellowish band measuring half of segment length or longer; with abundant, short, decumbent setae and scattered erect setae. Collar and anterior pronotal lobe dark brown; posterior pronotal lobe with brown hues, lateral margins and posterolateral angles light brown. Pronotum with short decumbent setae, and with some long erect setae on anterior lobe. In some specimens posterior pronotal lobe presents four irregular longitudinal light brown bands. Generally males have larger anterior pronotal lobe and profemora; in such cases rostrum reaching anterior border of mesosternum, whereas in females and males with smaller pronotum rostrum extends backwards and reaching mesocoxae. Scutellum brown to dark brown, punctate, with short decumbent setae and long erect setae similar to those of anterior pronotal lobe; with Y-shape carina slightly bulky medially. Hemelytra with short decumbent setae. Clavus with three rows of punctures and a partial fourth over distal half between median and inner rows; color brown not uniformly tinged, apex light brown. Corium brown not uniformly tinged, anterior half of lateral margins and a subapical macula light brown; external corial margin slightly concave. Membrane brown, unevenly pigmented. In some specimens hemelytra not attaining apex of abdomen. Pleura dark brown, acetabular areas, and metepimeron lighter, with reddish hues in some specimens; punctate, with abundant short silver decumbent setae.



FIGURES 6–10. *Paisana brachialis* (Stål) comb. n. Male genitalia. 6—pygophore, dorsal view; 7—pygophore, lateral view; 8—right paramere, inner view; 9—right paramere, outer view; 10—aeagus.

Protibiae with numerous minute tubercles over ventral surface; males with four equidistant spines bearing a setae on distal half, proximal spine largest. Coxae dark brown with reddish hues, rest light brown; pretarsi and meso- and metatibiae basally darker and with dark brown regions as follows: a wide band on 2/3 of profemora length (in some specimens profemora mottled and fringe less defined), a distal fringe and apex on meso- and metafemora, and apex of tibiae. Legs with decumbent setae, more abundant on tibiae distally and tarsi, and semierect sparse setae.

Abdomen brown to dark brown. Pygophore (Figs. 6–7): anterior margin of dorsal aperture rounded; inner projections subtriangular. In lateral view: dorsal margin slightly declivent posteriorly; with two faint protuberances posteroventrally. Parameres (Figs. 8–9): blade short and slightly curved; shank with an inner projection, with setae on upper margin and on basal portion of blade, outer projection with three long setae. Aedeagus (Fig. 10) without spines; vesica with two lobes, irregularly sclerotized; ejaculatory reservoir with small wings, vesica and conjunctiva slightly sclerotized distally.

Distribution. Argentina (FIRST RECORD), Brazil.

Remarks. *P. brachialis* is very similar to *P. pampeana*; see remarks of *P. pampeana* to distinguish these species.

Studied material. Lectotype: ♀, Brazil, designated by G. G. E. Scudder (1977: 30) (SMNH) [very poorly preserved, abdomen pinned, head and thorax with legs embedded in glue on a separate pinned cardboard,

hemelytra glued separately to same cardboard].

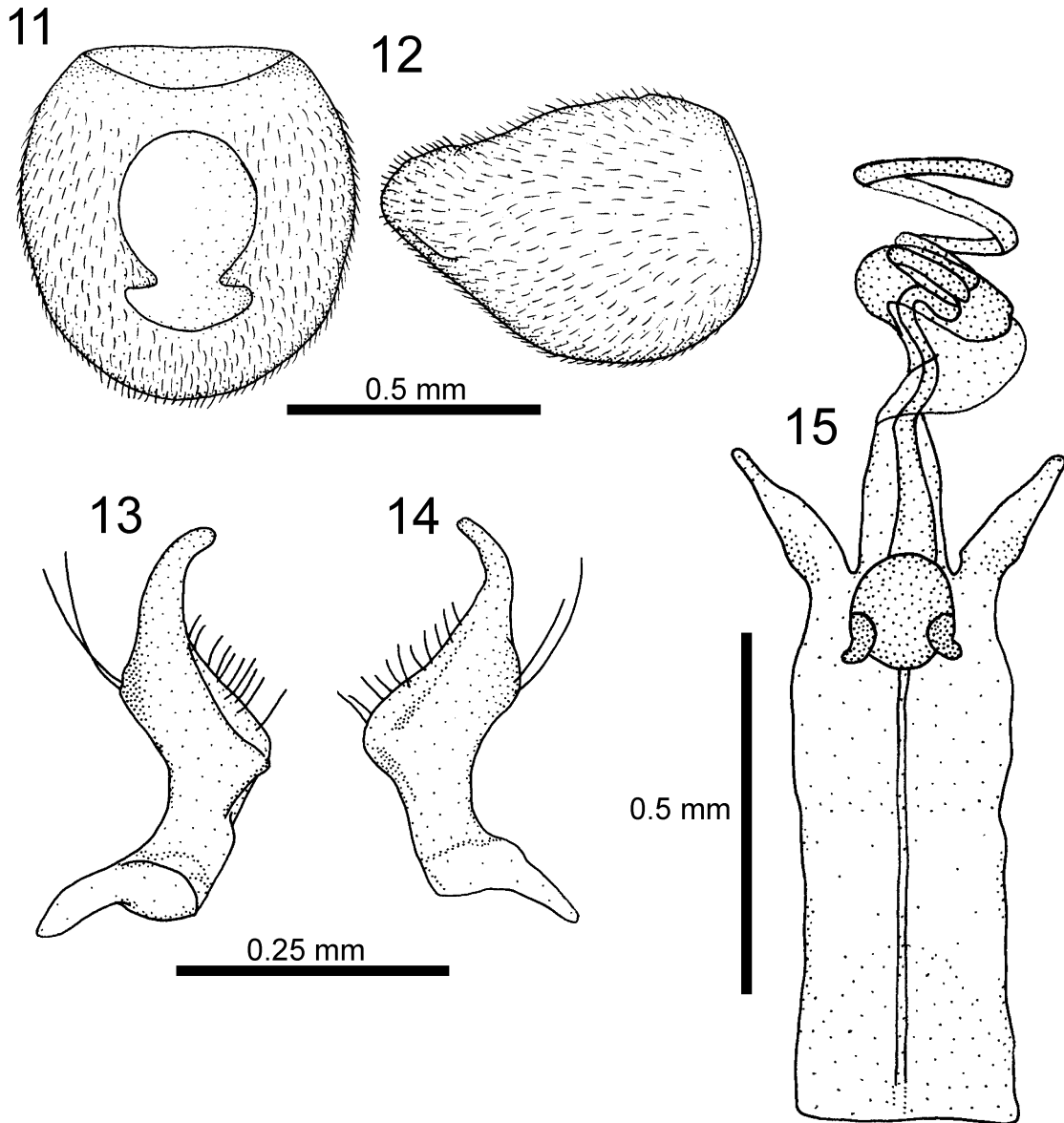
Additional studied material. Argentina: BUENOS AIRES.- 1 ♂, 2 ♀♀, Punta Lara, VI-2002, D. L. Carpintero (MLP); 4 ♂♂, 2 ♀♀, Est. Pereyra, La Plata, 9-XI-2000, P. M. Dellapé (MLP); 1 ♂, Pereyra, X-1962, D. L. Carpintero (CC); 1 ♀, Tandil, 22/24-XI-2002, D. L. Carpintero (MLP); 1 ♀, same locality, 19-IV-2003, pitfall trap, Carpintero-Dellapé (MLP); 1 ♀, Delta del Paraná, 6-I-1948, A. O. Bachmann (MACN); 1 ♂, Zelaya, VII-1935, Pereyra (MACN); 1 ♀, Isla Martín García, 14/19-III-1932, M. J. Viana (MACN); 2 ♂♂, 2 ♀♀, Dique Luján, VI-1938, J. Viana (CC); 1 ♂, 1 ♀, 1 nymph, Mar del Plata, Lag. de los Padres, VI-2000, A. Cicchino (CC), 1 ♂, 2 ♀♀, same locality, VII-2000, A. Cicchino, pitfall trap (CC), 2 ♂♂, 1 ♀, 3 nymphs, same locality, V-2001, A. Cicchino, pitfall trap (CC); 2 ♂♂, 2 ♀♀, Villa Tesei, 1999, D. L. Carpintero, light trap (CC); 1 ♀, San Pedro, X-2002, D. L. Carpintero (MLP). CÓRDOBA.- 1 ♂, La Paz (Dep. de San Javier), 1/20-I-1929, C. Bruch (MACN). ENTRE RÍOS.- 1 ♂, 15-II-1948 (MACN); 1 ♂, Concordia, 1938, Hayward (MACN); 2 ♀♀, Delta, río Chaná, 19-I-1919, E. E. Blanchard (MACN). JUJUY.- 1 ♂, 1 ♀, 1 nymph, Las Capillas, XII-1988, D. L. Carpintero (CC). MISIONES.- 1 ♂, Pto. Piray Km 18, 18-IX-1951, A. Rivas (MACN); 1 ♂, Arroyo Uruguá Km 30, Iguazú, X-1954, R. N. Orfila (MACN). **Brazil:** PARANA.- 4 ♂♂, 6 ♀♀, Bocainval, XII-(19)63, Plaumann (CAC). SANTA CATARINA.- 1 ♂, 1 ♀, Nova Teutonia, V-1948, Fritz Plaumann (MZUSP).

***Paisana pampeana* n. sp.**

(Figs. 2, 11–15)

Description. *Holotype male* (Fig. 2): Total length: 6.27. Head dark brown tinged with red, clypeus brown; with abundant silver short decumbent setae, and longer semierect scattered setae dorsally. Head length: 1.12. Head width: 0.99. Antenniferous tubercles slightly divergent. Eyes rounded, with some setae between ommatidia. Interocular space: 0.54. Ocelli located at same level as imaginary line through posterior margin of eyes, closer to eyes than to collar. Interocellar space: 0.29. Rostrum brown, articles II and III paler, apex of article IV dark brown; with sparse erect setae. Rostrum reaching mesosternum. Rostral length: article I 0.64, article II 0.72, article III 0.59, article IV 0.42. Antenna brown, distiflagellomere with pale fringe with reddish tonalities; with abundant short decumbent setae, and sparse erect setae. Antennal length: scapus 0.53, pedicellus 0.99, basiflagellomere 0.86, distiflagellomere 1.04.

Collar and anterior pronotal lobe dark brown; posterior lobe brown, with 4 longitudinal irregular bands, and with posterolateral angles light brown. Pronotum with short, decumbent setae, anterior lobe with long erect setae. Length of collar, anterior pronotal lobe, and posterior pronotal lobe: 0.11; 0.83; 0.50, respectively. Width of collar, anterior pronotal lobe, and posterior pronotal lobe: 0.72; 1.14; 1.63, respectively. Scutellum brown; punctate; with short decumbent setae and long erect setae like those on anterior pronotal lobe; with Y-shaped carina slightly bulky medially. Hemelytra with very short decumbent setae. Clavus with three rows of punctures and an incomplete row on distal 4/5 between median and inner rows, and scattered additional punctures on distal half; color brown. Corium brown, not uniformly pigmented, lateral margins light brown, broadening to form a small subapical macula; external margin of corium slightly concave. Membrane fuscous, with pale veins. Pleura dark brown, acetabular areas and metepimeron brown; punctate and setose, with abundant short silver decumbent setae. Protibiae with numerous minute tubercles over entire ventral surface, and with four equidistant spines on distal half, the first one larger, each bearing a seta. Coxae dark brown, with reddish hues, profemora with a broad brown band on distal 2/3, rest of legs light brown, distal 1/4 of meso- and metafemora and pretarsi darker. Legs with decumbent setae more abundant distally on tibiae and tarsi, and with semierect sparse setae.



FIGURES 11–15. *Paisana pampeana* sp. n. Male genitalia. 11—pygophore, dorsal view; 12—pygophore, lateral view; 13—right paramere, inner view; 14—right paramere, outer view; 15—aedeagus.

Abdomen brown. Abdominal length: 2.93. Pygophore (Figs. 11–12): anterior margin of dorsal aperture rounded; inner projections subtriangular. In lateral view: dorsal margin slightly declivent posteriorly. Parameres (Figs. 13–14): blade short and slightly curved, shank with inner projection bearing setae on upper margin and basal portion of blade, outer projection with three long setae. Aedeagus (Fig. 15) with two large lobes on vesica irregularly sclerotized; ejaculatory reservoir with reduced wings, vesica and conjunctiva slightly sclerotized distally.

Distribution. Argentina.

Remarks. The protibiae are unspined in females, with only very minute tubercles. In some specimens the hemelytra do not reach the abdominal apex, whereas in others the profemora are mottled and with a less defined band.

The coloration of some specimens is darker, with pronotum, pleurae, and abdomen dark brown. Others specimens show a well defined pale band on the distiflagellomere; these specimens could be easily confused with *Paisana brachialis*. These two species are quite similar in both external appearance and male genitalia;

and are sympatric over a large proportion of their known geographic distribution. *Paisana pampeana* can be separated from *Paisana brachialis* by the coloration of the legs (the meso- and metafemora of *Paisana pampeana* are darker on the apical third, whereas those of *Paisana brachialis* have a subapical dark brown band that contrasts with the lighter coloration of the rest of the femora), the pronotal vestiture (although both species show large erect setae on pronotum, these are more abundant in *Paisana pampeana*), and the head length (shorter in *Paisana pampeana* with short postocular region).

Etymology. The epithet refers to the known distributional pattern of the species, which coincides with the Pampean biogeographical province.

Studied material. Type material. Holotype: ♂, Argentina, Entre Ríos, Colón, Ruinas del viejo molino, 06-II-2003, Grandinetti-Cichino, light trap (MLP).

Paratypes: Argentina: ENTRE RÍOS: 2 ♂♂, 3 ♀♀, same data as holotype (MLP); 2 ♂♂, Liebig, 01-2003, L. Caire, T. luz (MLP). BUENOS AIRES: 1 ♂, City Bell, 13-II-2002, P. M. Dellapé (MLP); 1 ♀, Coronel Suárez, Villa Arcadia, III-2004, M. Ronderos (MLP). SAN LUIS: 1 ♀, Ea El Centenario, Dpto. Gral. Pedernera, 16-29 de Abril 2007, light trap, M. Donato (MLP).

Additional studied material. Argentina: BUENOS AIRES.- 2 ♂♂, 2 ♀♀, (MACN); 2 ♀♀, 8-II-1936, S. Venturi (MACN); 1 ♀, delta del Paraná, Arroyo Antequera, 3-III-1946, Bohmerwald (MACN); 1 ♂, Punta Indio (MACN); 1 ♀, Punta Piedras, XI-1998, D. L. Carpintero (CC); 1 ♀, Tigre (MACN); 1 ♀, San Nicolás, 1949, Sonia Rivas (MACN); 1 ♂, Bella Vista, XII-1950, M. Gallardo (MACN); 1 ♂, same locality (MACN); 1 ♀, Quilmes, I-2002, D. L. Carpintero, light trap (CC); 1 ♂, Coronel Suarez, Villa Arcadia, III-2004, M. Ronderos (MLP); 1 ♀, La Plata, X-2002, C. Melo (MLP); 1 ♂, same locality, 4-IV-2004, C. Melo (MLP); 1 ♀, same locality, XII-2004, H. Merlo (MLP); 2 ♂♂, 1 ♀, City Bell, 13-II-2002, P. M. Dellapé (MLP); 1 ♀, Berisso, XII-1987, D. L. Carpintero (CC); 2 ♂♂, 7 ♀♀, Verónica, XII-1998, D. L. Carpintero, light trap (CC); 1 ♀, same locality, 30-XI-2003, D. L. Carpintero, light trap (CC); 1 ♂, Dique Luján, VI-1938, Viana (CC); 1 ♀, San Pedro, X-2003, D. L. Carpintero (CC). ENTRE RÍOS: 9 ♂♂, 10 ♀♀, Riachuelo, Río Uruguay, 1930, A. Stevenin (MACN); 7 ♀♀, Colón, Ruinas del viejo molino, 06-II-2003, Grandinetti-Cichino, light trap (MLP); 2 ♂♂, 1 ♀, Colón, 2002, D. L. Carpintero (MLP); 3 ♀♀, Brazo Largo, XII-1999, D. L. Carpintero (CC). SANTA FE: 1 ♂, Rosario de Santa Fe, A. Stevenin (MACN).

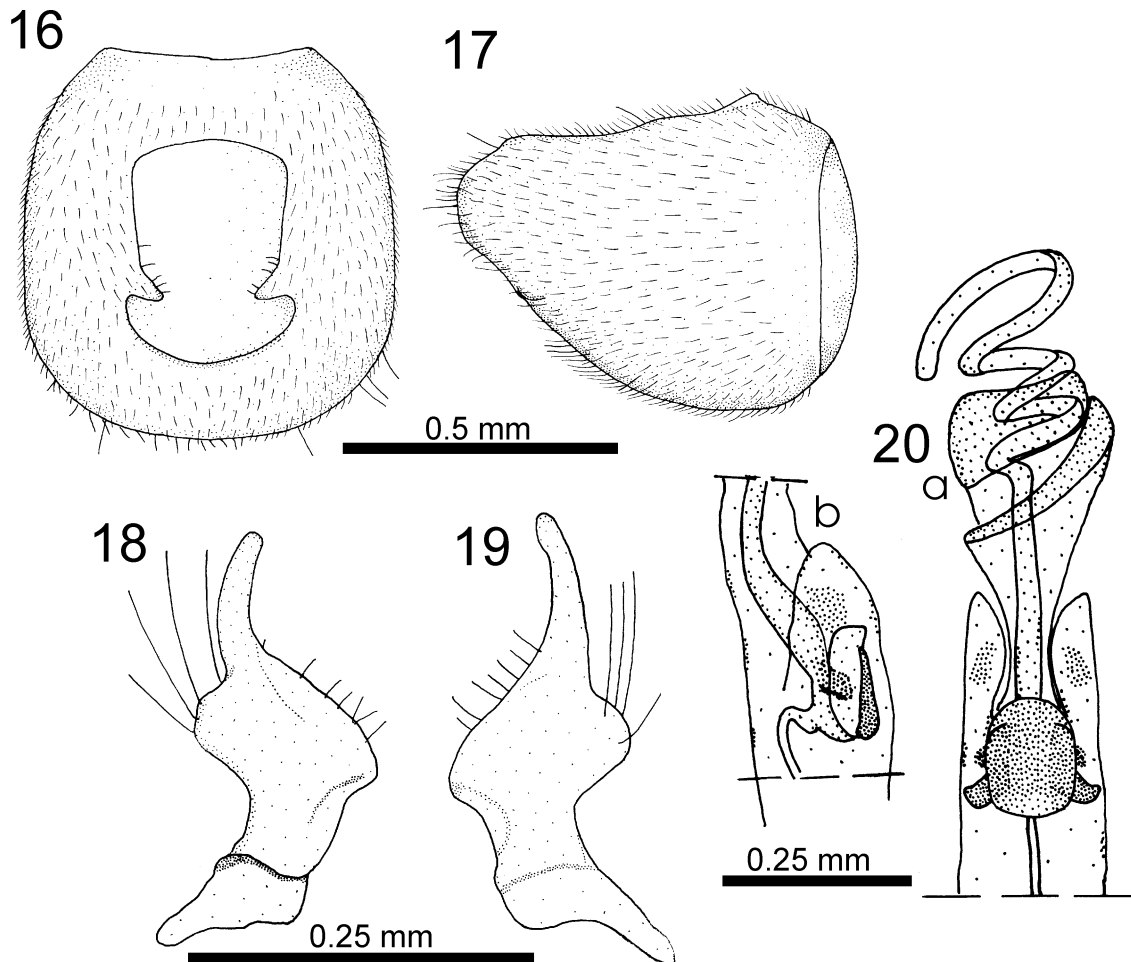
Paisana lydiae n. sp.

(Figs. 3, 16–20)

Description. *Holotype male* (Fig. 3): Total length: 6.67. Head dark brown, clypeus brown; with abundant short silver decumbent setae; and longer semierect sparse setae dorsally. Head length: 1.12. Head width: 1.04. Antenniferous tubercles slightly divergent. Eyes slightly oval. Interocular space: 0.51. Ocelli located behind imaginary line through posterior margin of eyes, closer to eyes than to collar. Interocellar space: 0.29. Rostrum light brown, not uniformly pigmented, apex of article IV dark brown, with sparse erect setae. Rostrum reaching mesocoxae. Rostral length: article I 0.72, article II 0.85, article III and IV absent. Antenna long; scapus, pedicellus, and basal 2/3 of basiflagellomere light brown, rest of basiflagellomere and distiflagellomere darker, the latter with yellowish basal band extending over approximately half of segment length; with abundant short decumbent setae. Antennal length: scapus 0.58, pedicellus 1.20, basiflagellomere 1.12, distiflagellomere 1.28

Collar and anterior pronotal lobe dark brown; posterior lobe irregularly tinged with brownish hues, with four irregular longitudinal light brown bands. Pronotum with short decumbent setae, and long erect setae on anterior lobe. Length of collar, anterior pronotal lobe, and posterior pronotal lobe: 0.10; 0.62; 0.61, respectively. Width of collar, anterior pronotal lobe, and posterior pronotal lobe: 0.70; 1.09; 1.66, respectively. Scutellum dark brown; punctate; with short decumbent setae and long erect setae as on anterior pronotal lobe.

Hemelytra brown, with anterior $\frac{3}{4}$ of corial margin and a subapical macula light brown; with short decumbent setae. Clavus with three rows of punctures and an incomplete fourth row of non-aligned punctures over distal $\frac{3}{4}$ between inner and median rows. External corial margin slightly concave with anterior half serrated. Membrane brown, not uniformly pigmented. Pleura dark brown, with acetabular areas, proepimeron and metepimeron lighter; punctate and setose, with abundant decumbent short silver setae. Coxae dark brown with reddish hues [fore legs absent]; rest light brown, except subapical band on mesofemora and apical $\frac{1}{3}$ of metafemora, brown. Legs with decumbent setae more abundant on distal tibiae and tarsi, and with semierect sparse setae.



FIGURES 16–20. *Paisana lydiae* sp. n. Male genitalia. 16—pygophore, dorsal view; 17—pygophore, lateral view; 18—right paramere, inner view; 19—right paramere, outer view; 20—aedeagus, a: frontal view, b: lateral view.

Abdomen brown. Length: 3.06. Pygophore (Figs. 16–17): anterior margin of dorsal aperture slightly concave; inner projections more developed posteriorly. In lateral view: dorsal margin not declivent posteriorly. Parameres (Figs. 18–19): blade short and slightly curved; shank with inner projection, with setae on upper margin and basal portion of blade, outer projection with four long setae. Aedeagus as in figure 20.

Paratypes. Fore femora dark brown except basally and distally light brown; tibiae and tarsi light brown. Femora incrassate, with semierect setae and two rows of spines ventrally; tibiae with many small tubercles ventrally.

Distribution. Brazil.

Remarks. This species can be easily distinguished from others by the partially serrated corial margin. Moreover, the pygophore of *P. lydiae* the greatest width is in the distal third (Fig. 16), in contrast in the other species the pygophore shows its greatest width medially (Fig. 11, 21, 26).

Etymology. This species is named in honor of the author's mother, Lydia María Albarello.

Studied material. Type material. Holotype: ♂ Brazil, MG, Serra Caraça, 1390 m, XI-1961, Kloss, Lenko, Martins & Silva (MZUSP). **Paratypes:** 2 ♀♀, same data (MZUSP).

***Paisana maculata* n. sp.**

(Figs. 4, 21–25)

Description. *Holotype male* (Fig. 4): Total length: 6.67. Head dark brown, clypeus brown; with abundant short silver decumbent setae, and longer semierect sparse setae dorsally. Head length: 1.10. Head width: 0.99. Antenniferous tubercles slightly divergent. Eyes slightly oval, with sparse setae between ommatidia. Interocular space: 0.51. Ocelli located behind imaginary line through posterior margin of eyes, closer to eyes than to collar. Interocellar space: 0.26. Rostrum: articles I and II light brown, articles III and IV brown; with erect sparse setae. Rostral article IV reaching mesosternum. Rostral length: article I 0.64, article II 0.70, article III 0.51, article IV 0.43. Antenna light brown; with abundant setae, pedicellus and basiflagellomere with erect and semierect setae, distiflagellomere with semierect setae and abundant short decumbent setae. Antennal length: scapus 0.56, pedicellus 1.15, basiflagellomere 0.93, distiflagellomere 1.07.

Collar and anterior pronotal lobe brown, posterior pronotal lobe light brown, not homogeneously pigmented, humeral angles darker. Pronotum setose, with short decumbent setae, and long erect setae over anterior lobe. Length of collar, anterior pronotal lobe, and posterior pronotal lobe: 0.14; 0.56; 0.58, respectively. Width of collar, anterior pronotal lobe, and posterior pronotal lobe: 0.69; 1.04; 1.70, respectively. Scutellum brown; punctate; with short decumbent setae, and long erect setae as on anterior pronotal lobe. Hemelytra light brown, apex of corium darker; with short decumbent setae. Clavus with three rows of punctures and an incomplete row over distal half, between the inner and median rows. External corial margin slightly concave. Membrane brown, not homogeneously pigmented. Pleura dark brown, acetabular area, proepimeron and metepimeron lighter; punctate and setose, with abundant decumbent short silver setae. Protibiae with numerous minute tubercles on ventral surface. Coxae dark brown, tinged with red; femora, tibiae and tarsi light brown; femora mottled. Legs with semierect and erect setae, more abundant on distal tibiae and tarsi.

Abdomen brown. Abdominal length: 3.00. Pygophore (Figs. 21–22): anterior margin of dorsal aperture rounded; inner projections with an anterior spine, more projected posteriorly. In lateral view: dorsal margin slightly declivent posteriorly. Parameres (Figs. 23–24): blade gradually narrowing to apex, slightly curved; shank with setose inner projection, with setae on upper margin and basal portion of blade, and outer projection with two long setae. Aedeagus as in figure 25.

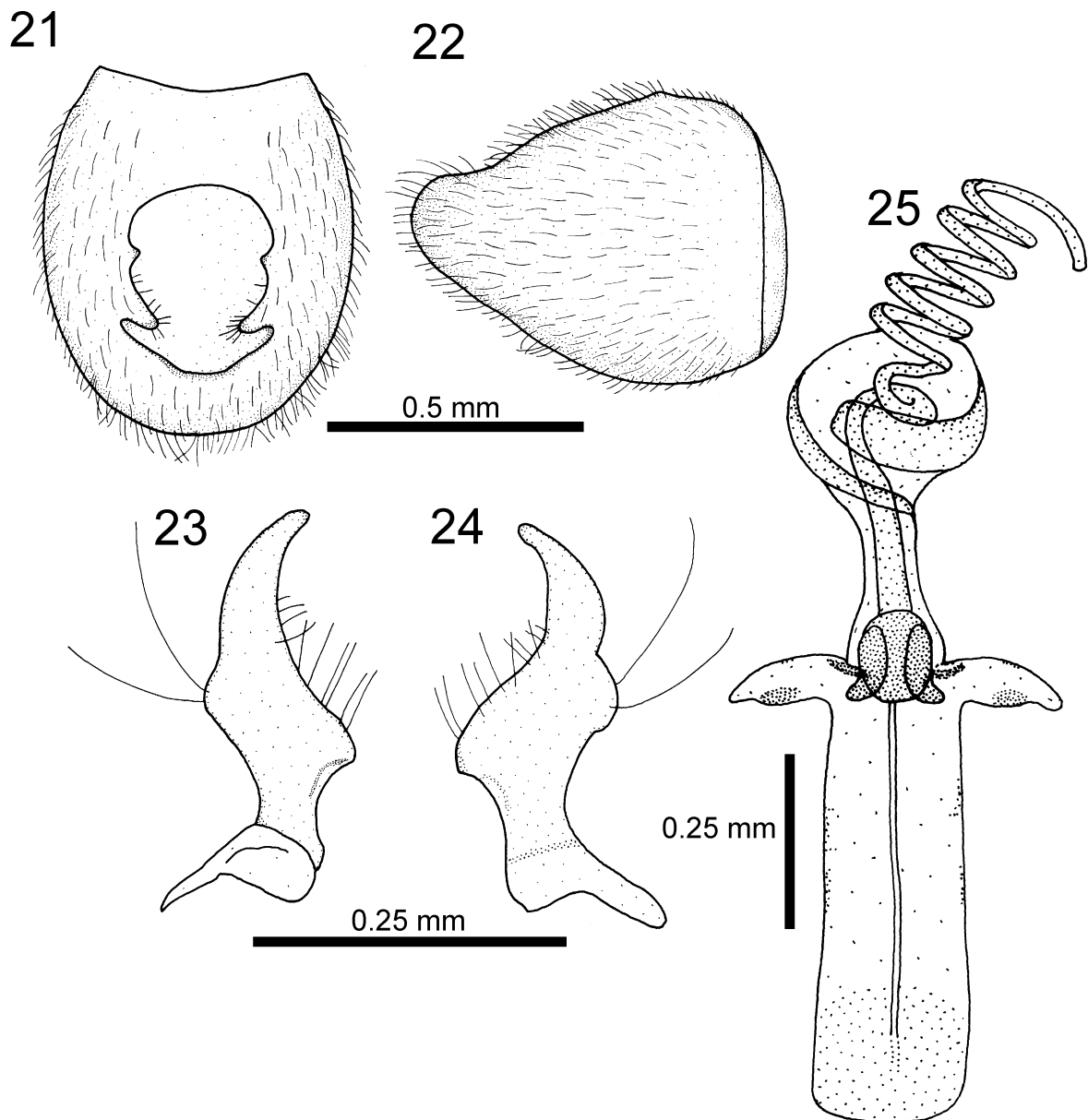
Distribution. Argentina, Brazil.

Remarks. Some specimens are darker, with dark brown anterior pronotal lobe and brown hemelytra, and with the anterior 2/3 of the corial margin and a subapical macula light brown. This is the only species in the genus that has mottled femora.

Etymology. The epithet alludes to the mottled appearance of the legs.

Studied material. Type material. Holotype: ♂, Argentina, Entre Ríos, Parque Nacional El Palmar, 16/18-XI-2001, M. C. Melo (MLP).

Paratypes: Argentina: BUENOS AIRES: 1 ♂, 1 ♀, Tandil, III-2003, P. M. Dellapé, light trap (MLP); 1 ♀, same locality, 22/24-XI-2002, D. L. Carpintero (MLP); 1 ♀, Mar del Plata, Laguna de los Padres, VIII-2000, A. Cicchino, light trap (CC). ENTRE RÍOS: 1 ♂, Colón, X-2002, D.L. Carpintero (MLP). CORRIENTES: 1 ♀, Ituzaingo, Reserva Santa María, light trap, 27-IV-2003, Melo (MLP). TUCUMAN: 1 ♀, Horcomolle, Mayo 1977, D. Carpintero (CC). **Brazil:** SÃO PAULO: 1 ♂, Campinas, *Heraeus* n. sp. det. H. G. Barber (CAC).



FIGURES 21–25. *Paisana maculata* sp. n. Male genitalia. 21—pygophore, dorsal view; 22—pygophore, lateral view; 23—right paramere, inner view; 24—right paramere, outer view; 25—aedeagus.

***Paisana saopaulensis* n. sp.**

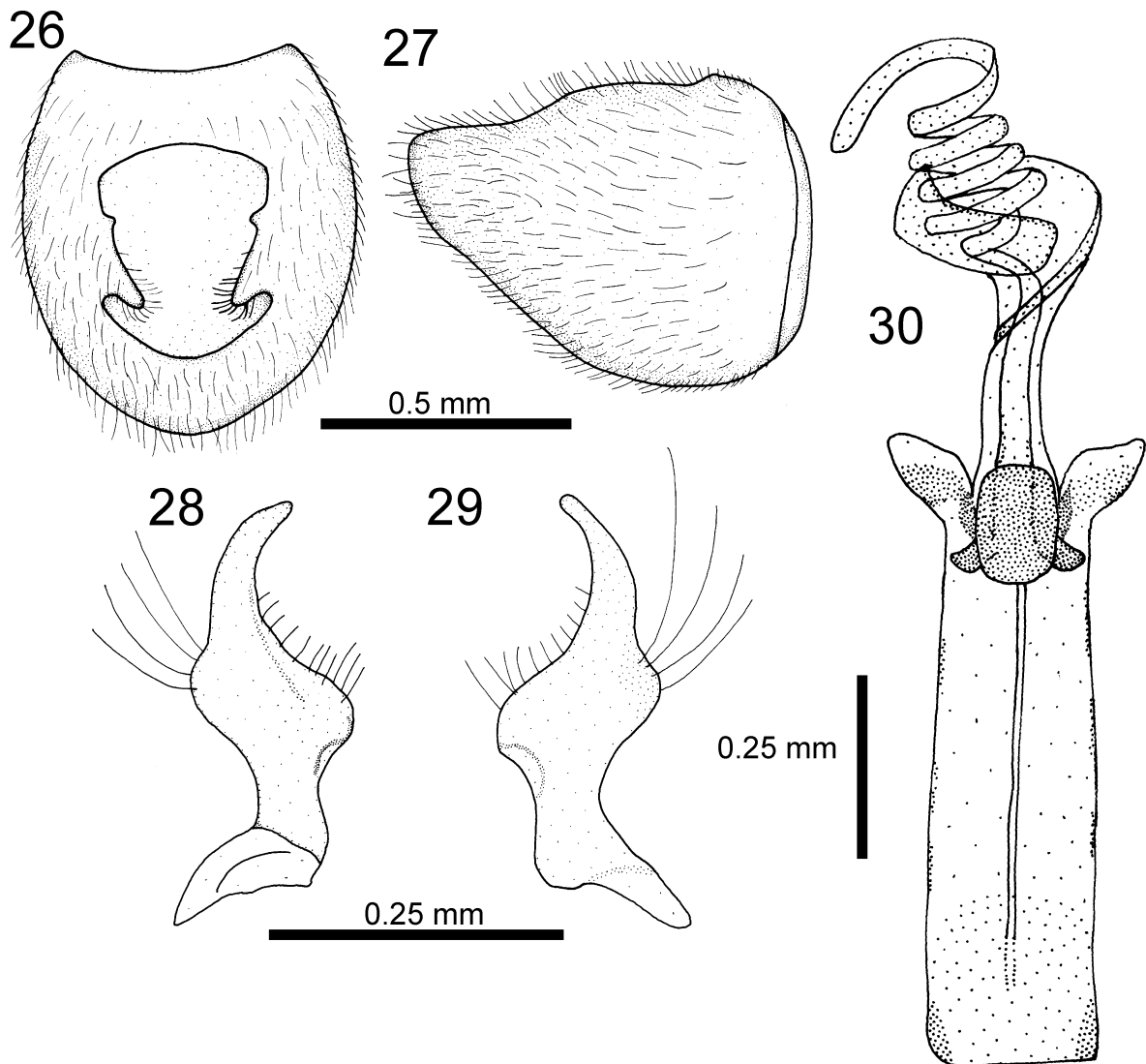
(Figs. 5, 26–30)

Description. *Holotype male* (Fig. 5): Total length: 7.20. Head brown with reddish hues; with abundant short silver anteriorly decumbent setae; and longer semierect sparse setae dorsally. Head length: 1.26. Head width: 1.14. Antenniferous tubercles slightly divergent. Eyes slightly oval. Interocular space: 0.58. Ocelli located behind an imaginary line through posterior margin of eyes, closer to eyes than to collar. Intero-cellular space: 0.32. Rostrum brown, not uniformly pigmented, apex of article IV dark brown; with sparse erect setae. Rostrum reaching mesocoxae. Rostral length: article I 0.80, article II 0.80, article III 0.62, article IV 0.46. Antennae with abundant semierect and sparse erect setae; distiflagellomere absent. Antennal length: scapus 0.66, pedicellus 1.46, basiflagellomere 1.22.

Collar and anterior pronotal lobe brown; posterior lobe brown with two longitudinal irregular light brown

bands. With short decumbent setae, and with long erect setae, more abundant on anterior lobe. Length of collar, anterior pronotal lobe, and posterior pronotal lobe: 0.11; 0.69; 0.62, respectively. Width of collar, anterior pronotal lobe, and posterior pronotal lobe: 0.74; 1.25; 1.89, respectively. Scutellum brown; punctate; with short decumbent setae, and long erect setae as on pronotum. Hemelytra brown, not uniformly pigmented; with short erect and semierect setae. Clavus with three rows of punctures and a partial row on distal $\frac{3}{4}$ between the inner and median rows. External margin of corium slightly concave. Membrane brown, not uniformly pigmented. Pleura dark brown, acetabular areas, proepimeron and metepimeron paler; punctate and setose, with abundant short decumbent silver setae. Profemora incrassate with spines restricted to distal half, outer row reduced to only three small spines. Protibiae with numerous minute tubercles along entire length. Coxae, profemora, and distal $\frac{1}{3}$ of meso- and metafemora brown, the rest light brown. Legs with erect and semierect setae, longer on profemora, more abundant on distal tibiae and tarsi.

Abdomen brown. Length: 3.33. Pygophore (Figs. 26–27): anterior margin of dorsal aperture slightly concave; inner projections with anterior spine, projected posteriorly. In lateral view: dorsal margin not declivent. Parameres (Figs. 28–29): blade gradually narrowing to apex, slightly curved; shank with a setose inner projection, with setae on upper margin and on basal portion of blade, and with external projection with four long setae. Aedeagus as in figure 30.



FIGURES 26–30. *Paisana saopaulensis* sp. n. Male genitalia. 26—pygophore, dorsal view; 27—pygophore, lateral view; 28—right paramere, inner view; 29—right paramere, outer view; 30—aedeagus.

TABLE 1. Measurements of *Paisana* species. Measurements of the new species correspond to paratypes.

	<i>Paisana brachialis</i> (Stål)		<i>Paisana pampeana</i> n. sp.	
	♂ (n: 5)	♀ (n: 5)	♂ (n: 5)	♀ (n: 5)
Total length	6.39–6.79 (6.58)	6.66–7.06 (6.85)	5.93–6.86 (6.45)	6.66–7.33 (6.85)
Head length	1.15–1.25 (1.20)	1.22–1.28 (1.25)	1.04–1.20 (1.11)	1.09–1.20 (1.14)
Head width	1.01–1.07 (1.03)	1.06–1.12 (1.09)	1.02–1.07 (1.04)	1.06–1.14 (1.11)
Interocular space	0.53–0.56 (0.54)	0.54–0.59 (0.57)	0.50–0.53 (0.52)	0.56–0.61 (0.58)
Interocellar space	0.27–0.34 (0.29)	0.30	0.27–0.30 (0.29)	0.27–0.32 (0.30)
Collar length	0.13–0.16 (0.14)	0.11–0.16 (0.14)	0.11–0.13 (0.12)	0.11–0.14 (0.12)
Ant. pronotal lobe length	0.75–0.93 (0.84)	0.72–0.80 (0.76)	0.75–0.91 (0.82)	0.69–0.80 (0.74)
Post. pronotal lobe length	0.51–0.59 (0.56)	0.56–0.64 (0.60)	0.46–0.58 (0.54)	0.56–0.62 (0.59)
Collar width	0.66–0.72 (0.69)	0.74–0.75 (0.74)	0.64–0.82 (0.75)	0.78–0.82 (0.80)
Ant. pronotal lobe width	1.09–1.20 (1.15)	1.14–1.28 (1.21)	1.02–1.28 (1.18)	1.17–1.30 (1.21)
Post. pronotal lobe width	1.49–1.73 (1.60)	1.66–1.86 (1.75)	1.49–1.82 (1.71)	1.79–1.95 (1.85)
Rostral article I	0.70–0.75 (0.73)	0.70–0.77 (0.73)	0.64–0.72 (0.67)	0.66–0.75 (0.72)
Rostral article II	0.80–0.88 (0.83)	0.80–0.86 (0.83)	0.66–0.75 (0.70)	0.75–0.83 (0.80)
Rostral article III	0.61–0.69 (0.64)	0.64–0.69 (0.65)	0.48–0.58 (0.54)	0.59–0.61 (0.60)
Rostral article IV	0.40–0.46 (0.42)	0.42–0.46 (0.43)	0.37–0.43 (0.41)	0.43–0.45 (0.44)
Scapus	0.53–0.62 (0.55)	0.51–0.59 (0.55)	0.48–0.53 (0.51)	0.45–0.53 (0.50)
Pedicellus	1.09–1.28 (1.16)	1.09–1.20 (1.15)	0.96–1.04 (1.01)	0.98–1.04 (1.00)
Basiflagellomere	0.85–1.02 (0.93)	0.88–0.99 (0.93)	0.83–0.88 (0.85)	0.80–0.88 (0.85)
Distiflagellomere	0.99–1.14 (1.08)	0.98–1.06 (1.03)	1.02–1.09 (1.06)	1.01–1.04 (1.03)
Abdominal length	2.88–3.20 (3.01)	3.01–3.40 (3.20)	2.56–3.20 (2.93)	2.98–3.53 (3.22)

continued.

	<i>Paisana lydiae</i> n. sp.	<i>Paisana maculata</i> n. sp.		<i>Paisana saopaulensis</i> n. sp.	
	♀ (n: 2)	♂ (n: 3)	♀ (n: 5)	♂ (n: 2)	♀ (n: 2)
Total length	6.40, 6.80	6.40–7.33 (6.80)	6.53–7.46 (7.10)	6.67, 7.20	7.2
Head length	1.12, 1.17	1.12–1.18 (1.14)	1.15–1.25 (1.21)	1.18, 1.22	1.28
Head width	1.01, 1.04	0.99–1.07 (1.03)	1.05–1.12 (1.10)	1.07, 1.12	1.14
Interocular space	0.51	0.46–0.51 (0.49)	0.53–0.56 (0.54)	0.56, 0.59	0.58
Interocellar space	0.27, 0.29	0.27	0.28–0.32 (0.30)	0.32	0.32
Collar length	0.11, 0.14	0.13	0.13–0.16 (0.15)	0.10, 0.14	0.13
Ant. pronotal lobe length	0.58, 0.64	0.56–0.61 (0.58)	0.61–0.64 (0.63)	0.64, 0.72	0.73
Post. pronotal lobe length	0.59, 0.64	0.51–0.58 (0.54)	0.58–0.69 (0.64)	0.58, 0.67	0.59, 0.69
Collar width	0.70, 0.75	0.64–0.74 (0.68)	0.66–0.77 (0.73)	0.69, 0.74	0.67, 0.75
Ant. pronotal lobe width	1.01, 1.12	0.96–1.12 (1.02)	1.02–1.18 (1.12)	1.12, 1.26	1.25, 1.33
Post. pronotal lobe width	1.63, 1.76	1.52–1.79 (1.63)	1.60–1.89 (1.80)	1.73, 1.86	1.76, 1.92
Rostral article I	0.69, 0.77	0.67–0.74 (0.70)	0.70–0.83 (0.78)	0.75, 0.80	0.74, 0.75
Rostral article II	0.83, 0.85	0.70–0.72 (0.71)	0.75–0.83 (0.80)	0.80, 0.85	0.75, 0.82
Rostral article III	0.59, 0.64	0.56–0.62 (0.59)	0.61–0.67 (0.64)	0.53, 0.59	0.51, 0.58
Rostral article IV	-	0.40–0.45 (0.42)	0.43–0.48 (0.45)	0.46, 0.51	0.46, 0.48
Scapus	0.56	0.50–0.58 (0.54)	0.56–0.58 (0.56)	0.64	0.64
Pedicellus	1.12	1.12–1.17 (1.15)	1.12–1.20 (1.16)	1.44	1.26, 1.30
Basiflagellomere	1.07	0.91–0.99 (0.95)	0.91–1.02 (0.95)	1.12	1.09, 1.12
Distiflagellomere	1.12	1.04–1.17 (1.10)	1.10–1.12 (1.11)	1.22	1.28
Abdominal length	3.06, 3.13	2.73–3.33 (3.06)	3.13–3.66 (3.53)	3.33, 3.40	3.40, 3.46

Distribution. Brazil.

Etymology. The epithet refers to the Brazilian state where the holotype was collected.

Remarks. The male genitalia, especially pygophore morphology, relates this species to *Paisana maculata*; both species have a small spine located anteriorly to the inner projections. They can be easily distinguished by the different leg coloration pattern, in *P. Saopaulensis* the profemora are brown and the meso- and metafemora light brown with the apical third brown whereas in *P. maculata* there are dark spots contrasting with the lighter background.

Studied material. Type material. Holotype: ♂, Brazil, São Paulo, Faz. Pau d'Alho Itu, XII-1963, U. Martins (MLP). **Paratypes: Brazil:** SÃO PAULO: 1 ♂, Barueri, 5-XII-1966, K. Lenko (MLP); PARANA: 1 ♂, 2 ♀, Banhado, 14-02-(19)72, E.G. & E. A. Munroe (CAC).

Acknowledgments

This work was funded by the Consejo Nacional de Investigaciones Científicas y Técnicas (CONICET), Argentina. I also would to thank to: Keve J. Ribardo (CAS); Diego Carpintero (CC); Michael D. Schwartz (CNC); Axel O. Bachmann (MACN); Carlos Campaner (MZUSP); and Bert Viklund (SMNH) for the loan of the specimens studied.

References

- Dellapé, P.M. (2003) A new species of *Ashlockobius* (Heteroptera: Rhyparochromidae: Myodochini) from Venezuela. *Zootaxa* 289, 1–6.
- Dellapé, P.M. (2005a) Biodiversidad, relaciones filogenéticas y aspectos biogeográficos de Rhyparochromidae (Lygaeoidea: Heteroptera) con especial referencia al género *Neopamera* Harrington 1980. PH.D. thesis. 249 pp.
- Dellapé, P.M. (2005b) Redescription of *Paromius procerulus* (Berg) (new combination) (Heteroptera: Rhyparochromidae: Myodochini), and description of eggs and immature stages. *Zootaxa* 1070, 49–60.
- Dellapé, P.M. & Melo, M.C. (2008) A new species of *Catenes* Distant from South America (Hemiptera: Heteroptera: Lygaeoidea: Rhyparochromidae). *Deutsche Entomologische Zeitschrift* 55, 245–248.
- Harrington, B.J. (1980) A generic level revision and cladistic analysis of the Myodochini of the world (Hemiptera, Lygaeidae, Rhyparochrominae). *Bulletin of the American Museum of Natural History* 167, 49–116.
- Henry, T.J. (1997) Phylogenetic analysis of family groups within the infraorder Pentatomomorpha (Hemiptera: Heteroptera), with emphasis on the Lygaeoidea. *Annals of the Entomological Society of America* 90, 275–301.
- Lethierry, L. & Severin, G. (1894) *Catalogue Général des Hémiptères*. Coreidae, Berytidae, Lygaeidae, Pyrrhocoridae. R. Friedlander and Fils: Bruxelles and Berlin, 2, 1–277.
- Scudder, G.G.E. (1977) The World Rhyparochrominae types (Hemiptera: Lygaeidae) XIII. The Stål types. *Entomologica Scandinavica* 8, 29–35.
- Slater, J.A. (1964) *A catalogue of the Lygaeidae of the world*, 2 vols. University of Connecticut, Storrs, Connecticut, 1668 pp.
- Slater, J.A. (1986) A synopsis of the zoogeography of the Rhyparochrominae (Heteroptera: Lygaeidae). *Journal of the New York Entomological Society* 94, 262–280.
- Slater, J.A. & O'Donnell, J.E. (1995) *A catalogue of the Lygaeidae of the world (1960–1994)*, The New York Entomological Society, New York, 410 pp.
- Stål, C. (1858) Bidrag till Rio Janeiro-traktens Hemipterfauna. *Kongliga Svenska Vetenskapsakademiens Handlingar*, 2, 1–84.
- Stål, C. (1874) Enumeratio Hemipterorum: Bidrag till en företeckning öfver alla hittills kända Hemiptera, jemte systematiska meddelanden. pt. 4. *Kongliga Svenska Vetenskapsakademiens Handlingar*, 12, 1–186.
- Walker, F. (1872) *Catalogue of the specimens of Hemiptera Heteroptera in the collection of the British Museum*. Printed for the Trustees of the British Museum: London, 5, 202 pp.